



45x20 cm / 18 x 8"

Order Ref: 01-5045



SWL: 200 kg/330 lbs

Do not leave the patient unattended during a transfer situation
Keep the manual where it is easily accessible for users of the product

EasyGlides are used in pairs to assist repositioning in the wheelchair when the patient has slid forward on the wheelchair seat. This smaller version of EasyGlide is designed for convenient placement under the patient's thighs and seat to eliminate friction and facilitate positioning in the chair.

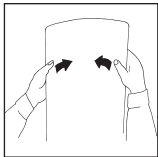
SystemRoMedic is a series of different models of transfer assistive devices. The choice of assistive devices depends on the transfer situation and the patient's functional capability and needs.



Functional inspection

Visual inspection

Check the condition and function of the assistive device regularly. Check to ensure that material is not worn or faded. If there are signs of wear, the product must be discarded.



Functional inspection

Carefully bend the EasyGlide to check strength and durability. The board should be both elastic and rigid. Discard the EasyGlide when its strength and durability are diminished.



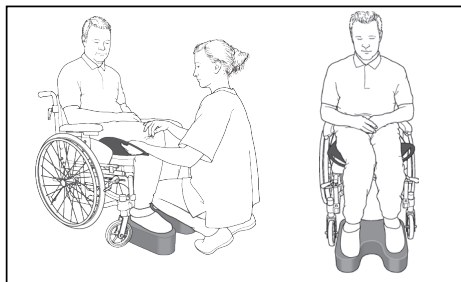
Always read the manual

Always read the manuals for all assistive devices used during a transfer.

Keep the manual where it is accessible to users of the product.

Do not leave the patient unattended during a transfer situation.

Placement



Place the EasyGlide by guiding it under the patient's thighs. This is facilitated by placing a FootStool under the feet and thereby raising the patient's thighs from the underlying surface. Guide the EasyGlide in under the patient's seat.

Do the same on the other side.

Farther back in the chair



Ask the patient to lean forward and push herself/himself farther back in the chair with the support of the armrests. The caregiver should remain in front of the patient to ensure safety.



If the patient is unable to move farther back in the chair, the caregiver can push against the patient's knees to reposition the patient farther back in the chair. Ask the patient to lean forward, or ask another caregiver to assist.

Removal



The transfer slides are removed by grasping the handles and drawing outward. Prevent the patient's body from moving by holding the patient as the slides are pulled out.

Material:

Polyethen

Care of the product:

Clean EasyGlide with water and disinfectant.

CE Medical Device Class I

The product meets the requirements of the Medical Devices Directive 93/42/EEC.

SystemRoMedic™

Easy-to-use assistive devices for

Easy transfers and to making life and work easier for both patients and personnel in the care sector.

Experience, innovation and training are the basis for SystemRoMedic, a total solution for every imaginable transfer situation.

Transfer: products for moving patients between locations.

Positioning: products for repositioning in the same location.

Support: products that provide mobility support.

Lifting: products adapted for lifting.

The philosophy behind SystemRoMedic is to prevent occupational injuries while improving the patient's sense of independence and dignity. Through a combination of training and a complete range of transfer-assistive devices, SystemRoMedic offers the means to improving both the work environment and the quality of care while enabling significant cost savings.

Their mission, is to help people, has always been, and will continue to be, their driving force of innovation. They love easy transfers.



info@amilakesouthern.co.uk