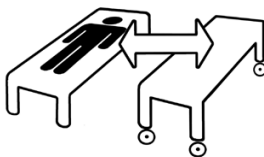




The picture shows the front and back of the board



SWL: 150 kg/330 lbs-250 kg/550 lbs

Order Ref

01-5000 L 47.24" x W 23.62" Single

01-5010 L 66.93" x W 23.23" Single

EasyGlide is used for horizontal transfers between bed and x-ray table/operating table/ gurney/shower trolley. For the sake of safety, both underlying surfaces should be firm when transferring between bed and gurney. EasyGlide can also be used to assist placement of a sling in both the recumbent and seated positions.

SystemRoMedic is a series of different models of transfer assistive devices. The choice of assistive devices depends on the transfer situation and the patient's functional capability and needs.



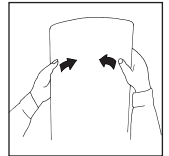
Functional inspection

Visual inspection

Check the condition and function of the assistive device regularly. Check to ensure that fabric is not worn or faded. If there are signs of wear, the product must be discarded. To ensure that fabric is not worn or faded. If there are signs of wear, the product must be discarded.

Functional inspection

Carefully bend the EasyGlide to check strength and durability. The mat should be both elastic and rigid. Discard the EasyGlide when its strength and durability are diminished.



Always read the manual

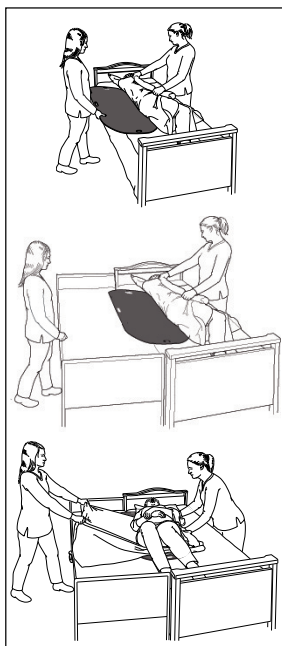
Always read the manuals for all assistive devices used during a transfer. Keep the manual where it is accessible to users of the product. Do not leave the patient unattended during a transfer situation.

Safety

For the sake of safety, both underlying surfaces should be firm when transferring between bed and gurney.



Transfer from bed to bed



The EasyGlide is placed under the hips and shoulders.

The patient is turned on one side. A draw sheet can be used to facilitate the transfer. Guide the EasyGlide in under the patient, between the bed sheet and the draw sheet. Press the EasyGlide down into the mattress somewhat and push in.

Ensure that the weight of the hips and shoulders is centred on the EasyGlide.

Transfer on transfer slide. Place the transfer slide between the two underlying surfaces. By using a draw sheet, the caregiver's reach is extended, allowing a better working stance.

Make sure the transfer slide is between the two underlying surfaces and that the gap between the beds does not exceed 15 cm/6 inch. Lean the patient towards the transfer slide and pull the draw sheet to transfer the patient.

To remove, lean the patient to one side and pull out the EasyGlide.

Material:

Polyethen

Care of the product:

Clean EasyGlide with water or disinfectant.

CE Medical Device Class I

The product meets the requirements of the Medical Devices Directive 93/42/EEC.

SystemRoMedic™

Easy-to-use assistive devices for

Easy transfers and to making life and work easier for both patients and personnel in the care sector.

Experience, innovation and training are the basis for SystemRoMedic, a total solution for every imaginable transfer situation.

Transfer: products for moving patients between locations.

Positioning: products for repositioning in the same location.

Support: products that provide mobility support.

Lifting: products adapted for lifting.

The philosophy behind SystemRoMedic is to prevent occupational injuries while improving the patient's sense of independence and dignity. Through a combination of training and a complete range of transfer-assistive devices, SystemRoMedic offers the means to improving both the work environment and the quality of care while enabling significant cost savings.

Their mission, is to help people, has always been, and will continue to be, their driving force of innovation. They love easy transfers.



info@amilakesouthern.co.uk